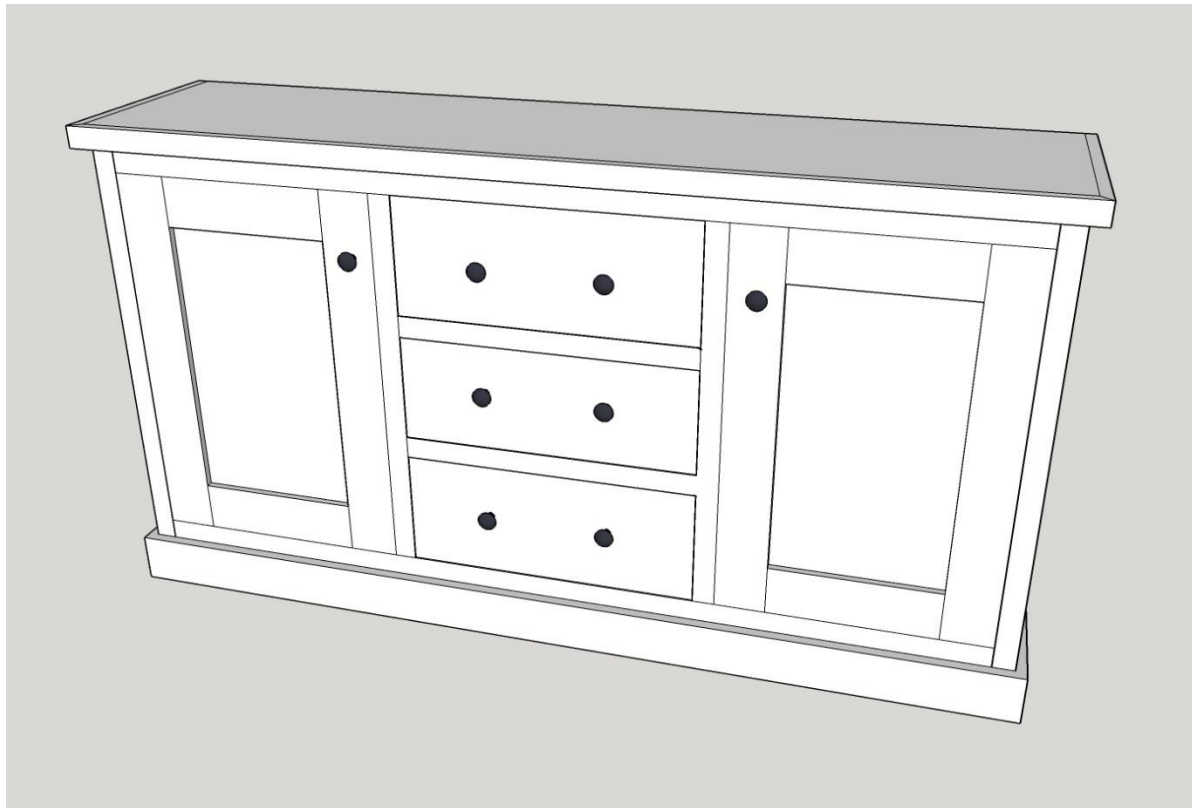


a burst of
BEAUTIFUL
inspiration for living in style and loving your home

SIMPLE MODERN FARMHOUSE SIDEBOARD BUFFET



© 2017 A Burst of Beautiful

SHOPPING & CUT LIST (ALL PRODUCT SIZES ARE QUOTED AS NOMINAL)

PRODUCT	QUANTITY	BOARD #	CUTS
2" x 4" x 8'	4	1	34.5" / 60.5"
		2	34.5" / 60.5"
		3	34.5" / 34.5" / 8" / 8" / 8"
		4	8"
1" x 4" x 8'	3	1	19.25" / 19.25" / 26.75" / 26.75"
		2	26.75" / 26.75" / 11.25" / 11.25" / 11.25"
		3	11.25"
1" x 3" x 6'	1	1	60.5"
1" x 2" x 8'	3	1	8" / 8" / 27" / 20.5" / 20.5" / 16" (1 END @ 45°) / 16" (1 END @ 45°)
		2	60.5" / 27"
		3	65.5" (45° ENDS)
9' OF 3.5" BASEBOARD	1	1	64.5" (45° ENDS) / 15.75" (1 END @ 45°) / 15.75" (1 END @ 45°)
4' X 8' - 1/4" MAPLE PLYWOOD	1	1	63.5" X 32.5" / 12.25" X 21.25" / 12.25" X 21.25"
16" X 8' LAMINATED PINE BOARDS	6	1	27.5" X 8" / 27.5" X 8" / 30.25" X 14.25"
		2	60.5" X 14.25" / 30.25" X 14.25"
		3	18" X 6.5" / 18" X 6.5" / 18" X 6.5" / 14" X 6.5" / 14" X 6.5" / 14" X 6.5"
		4	18" X 6.5" / 18" X 6.5" / 18" X 6.5" / 14" X 6.5" / 14" X 6.5" / 14" X 6.5"
		5	18" X 12.5" / 18" X 12.5" / 18" X 12.5" / 20.375" X 8.125"
		6	20.375" X 8.125" / 64" X 15.25"
16" X 4' LAMINATED PINE BOARD	1	1	20.375" X 7.375"

ADDITIONAL SUPPLIES (Contains Affiliate Links)

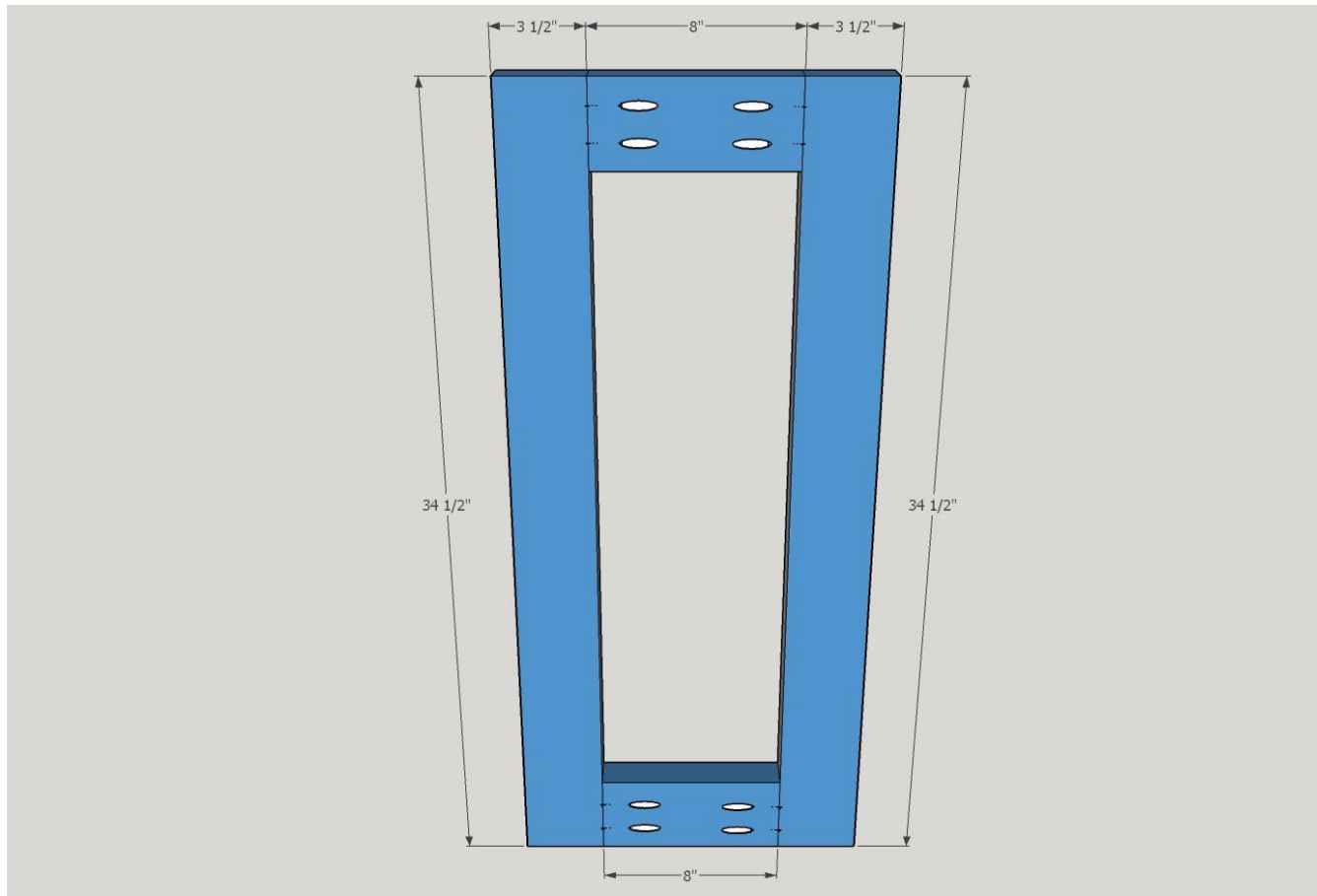
1. [2.5" Kreg Pocket Hole Screws \(12\)](#)
2. [1.25" Kreg Pocket Hole Screws \(94\)](#)
3. [1.25 Wood Screws \(6\)](#)
4. [1.25" finishing nails](#)
5. [80 / 120 / 220 grit 5" sanding discs](#)
6. [Gorilla Wood Glue](#)
7. [Wood Filler](#)
8. [Measuring Tape](#)
9. [Pencils](#)
10. [3 Pairs – 14" drawer slides](#)
11. [4 – Non-mortised hinges](#)
12. Cabinet Hardware
13. 2 - Magnetic or Double Roller Catches

TOOLS REQUIRED (Contains Affiliate Links)

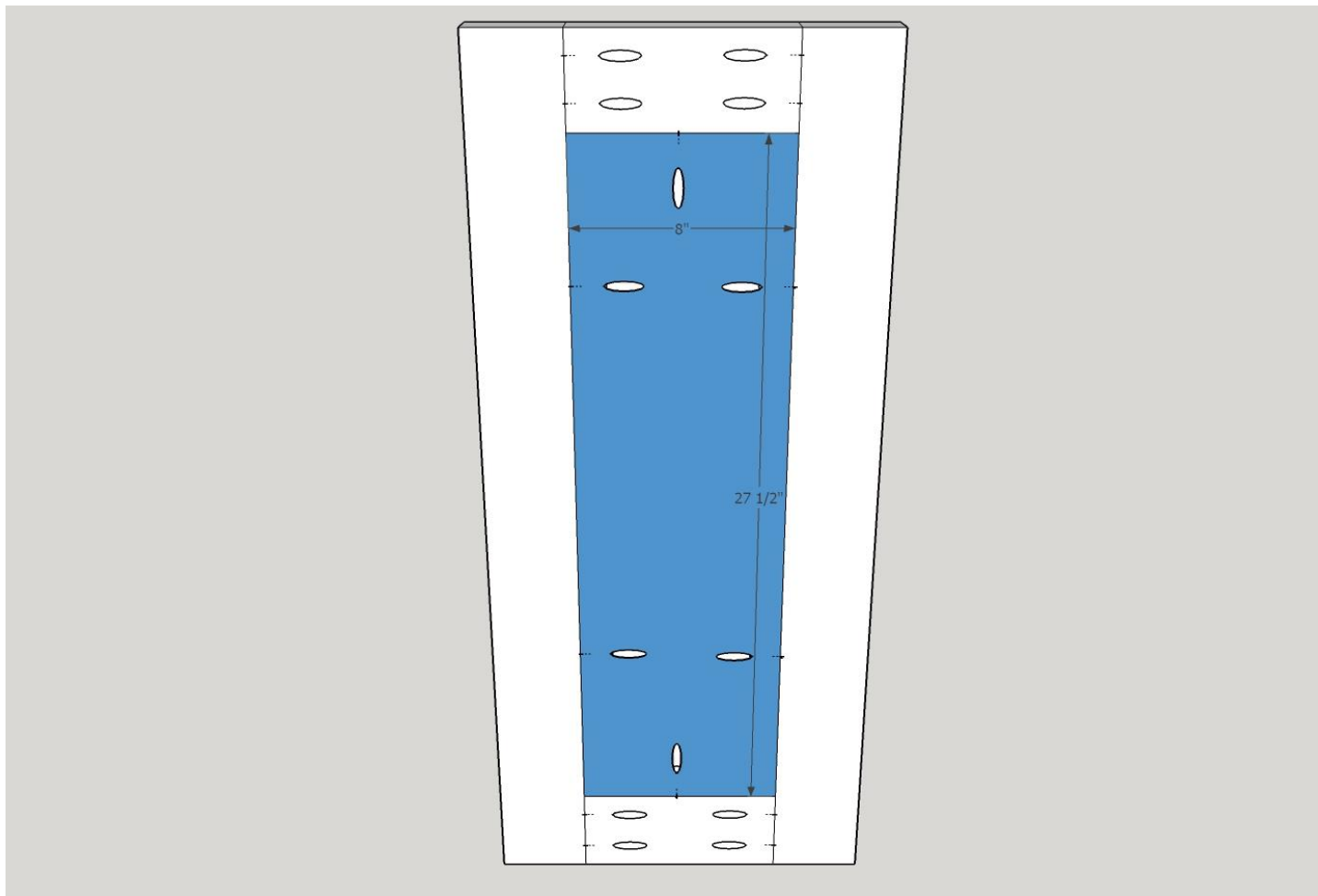
1. [Kreg Jig K4 Master System](#)
2. [Jigsaw](#)
3. [Drill](#)
4. [5" Circular Sander](#)
5. [Table Saw](#)
6. [Mitre Saw](#)
7. [Circular Saw](#)
8. [Brad Nailer & Compressor](#)
9. [Safety Glasses](#)
10. Hearing Protection

STEPS

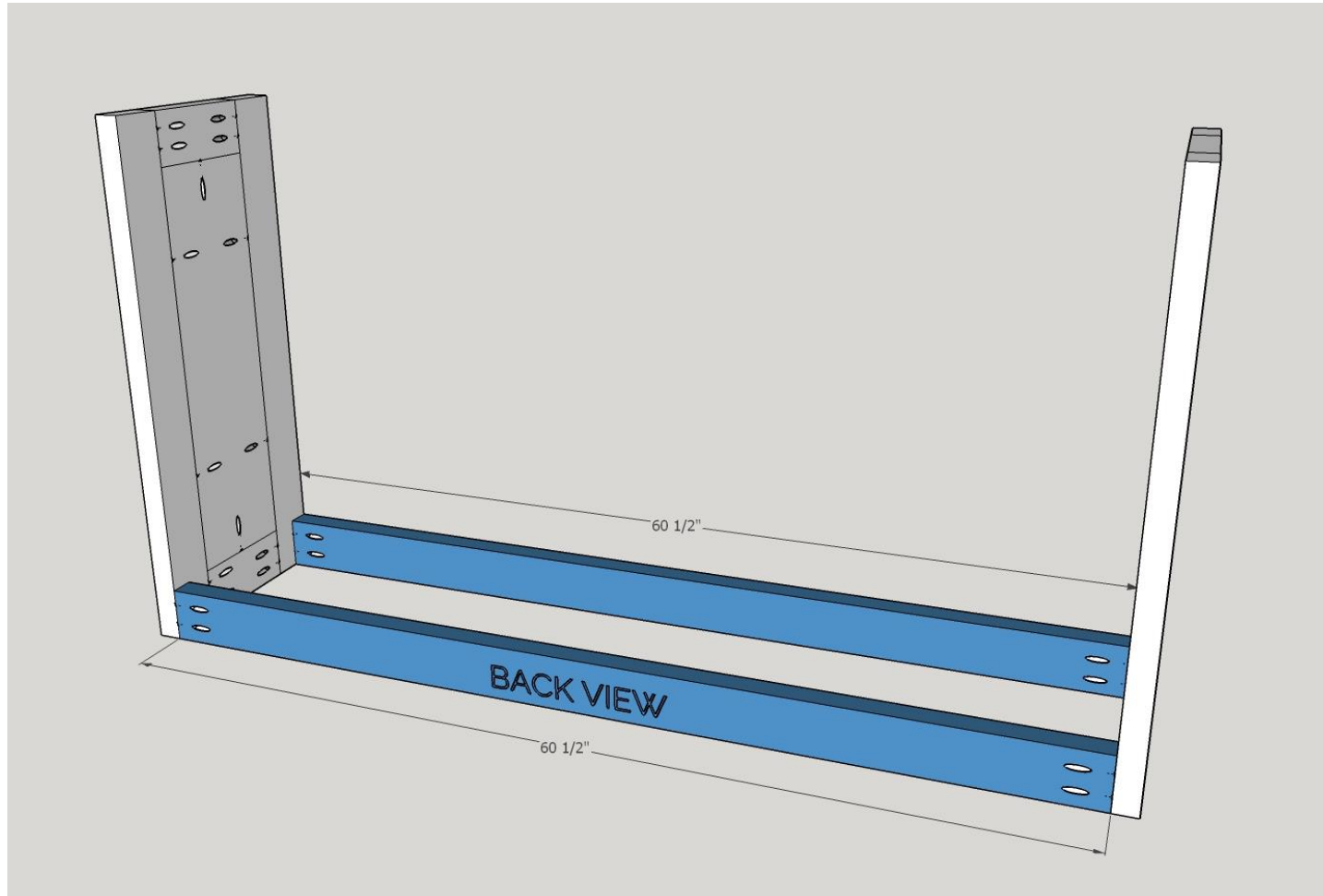
1. Always use the proper personal safety equipment. SAFETY ALWAYS COMES FIRST!
2. Cut your lumber according to the "CUTS" column in the shopping list above. Mark the length on each board with a pencil as you cut it to make things easier when it comes time to assemble the pieces.
3. Create **TWO** of these side panels using the 2 x 4 pieces. Drill pocket holes on the 8" pieces as shown below. Dry fit, and make sure it is square before attaching. Using 8 - 2.5" pocket screws and wood glue, attach as shown below to create a rectangle. Remember to make two of these.



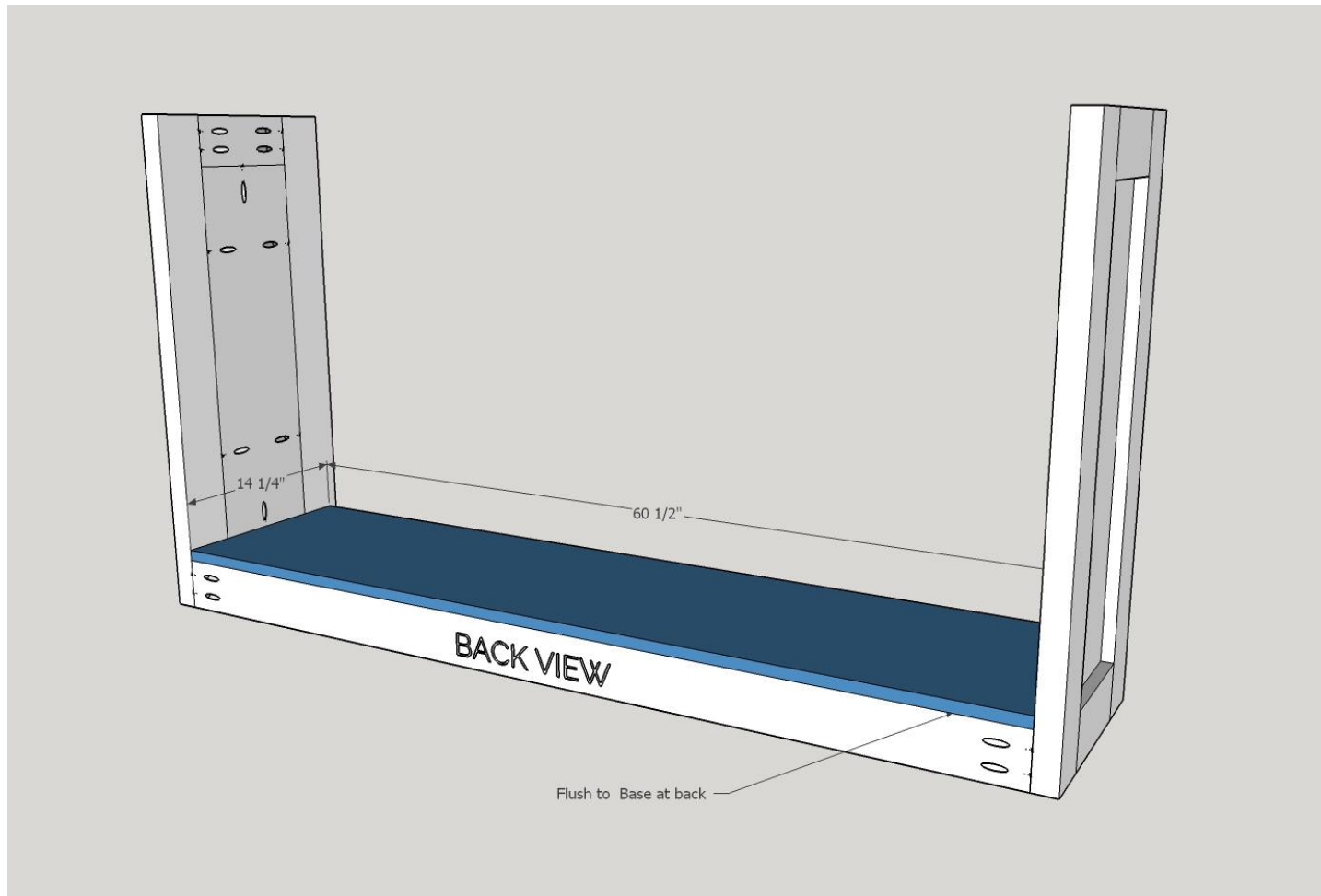
4. Dry fit the 8" x 27.5" cut of 3/4" plywood. Bring it flush to the inside of the 2x4's. Screw in place using 6 - 1.25" pocket hole screws.



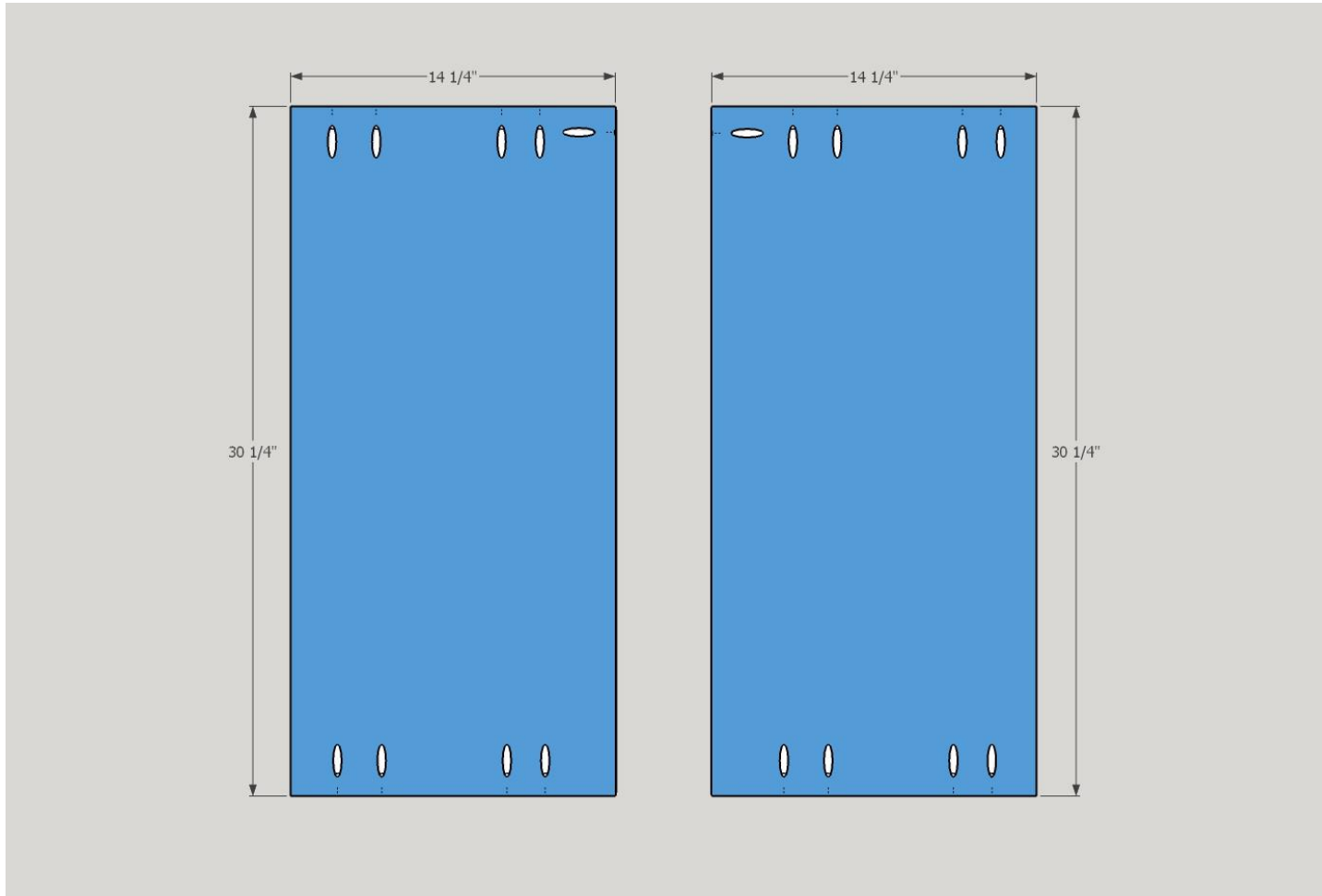
5. Drill pocket holes on either end of the 60.5" 2 x 4 boards for the base on the same side as shown below. Ensure the base is square and secure with 8 - 2.5" pocket hole screws and wood glue.



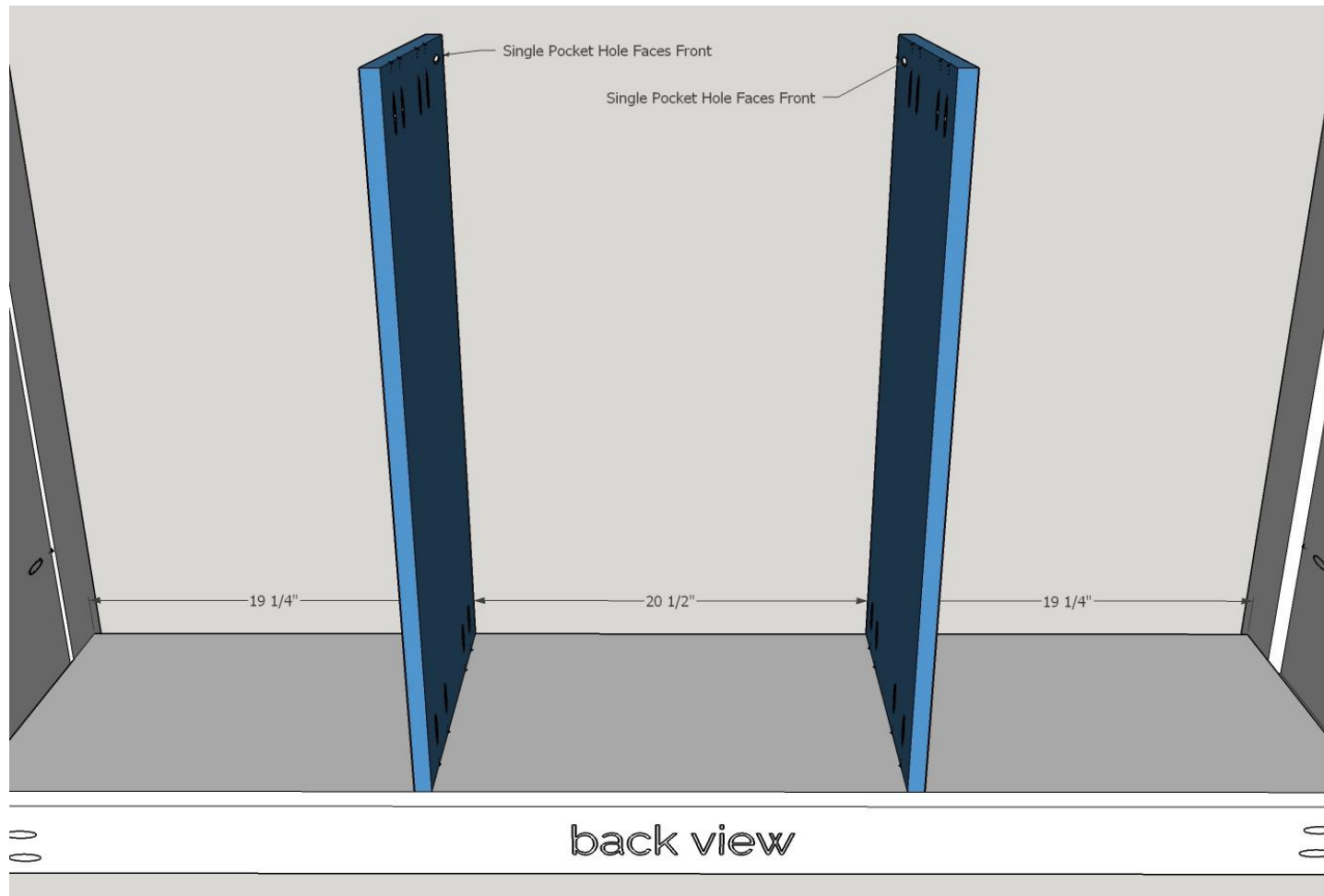
6. Dry fit 60.5" x 14.25" - 3/4" laminated shelf board, making sure that it is flush with the back of the base. This will leave 3/4" at the front that will be trimmed out in a later step. Secure with 2" finishing nails using a brad nailer



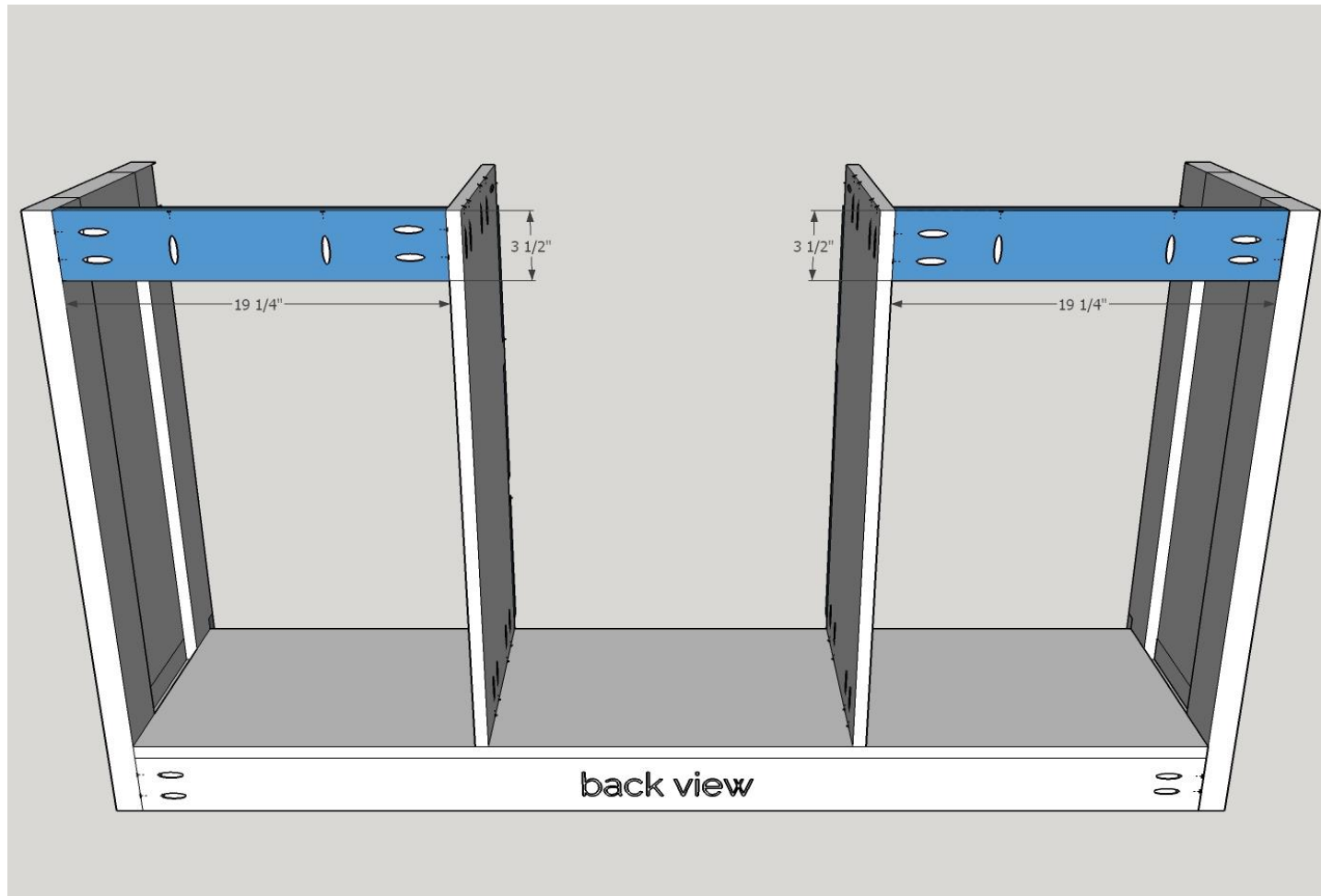
7. On the panels you've cut out of the 3/4" laminated shelving board or plywood, add pocket holes in the approximate locations indicated on the diagrams.



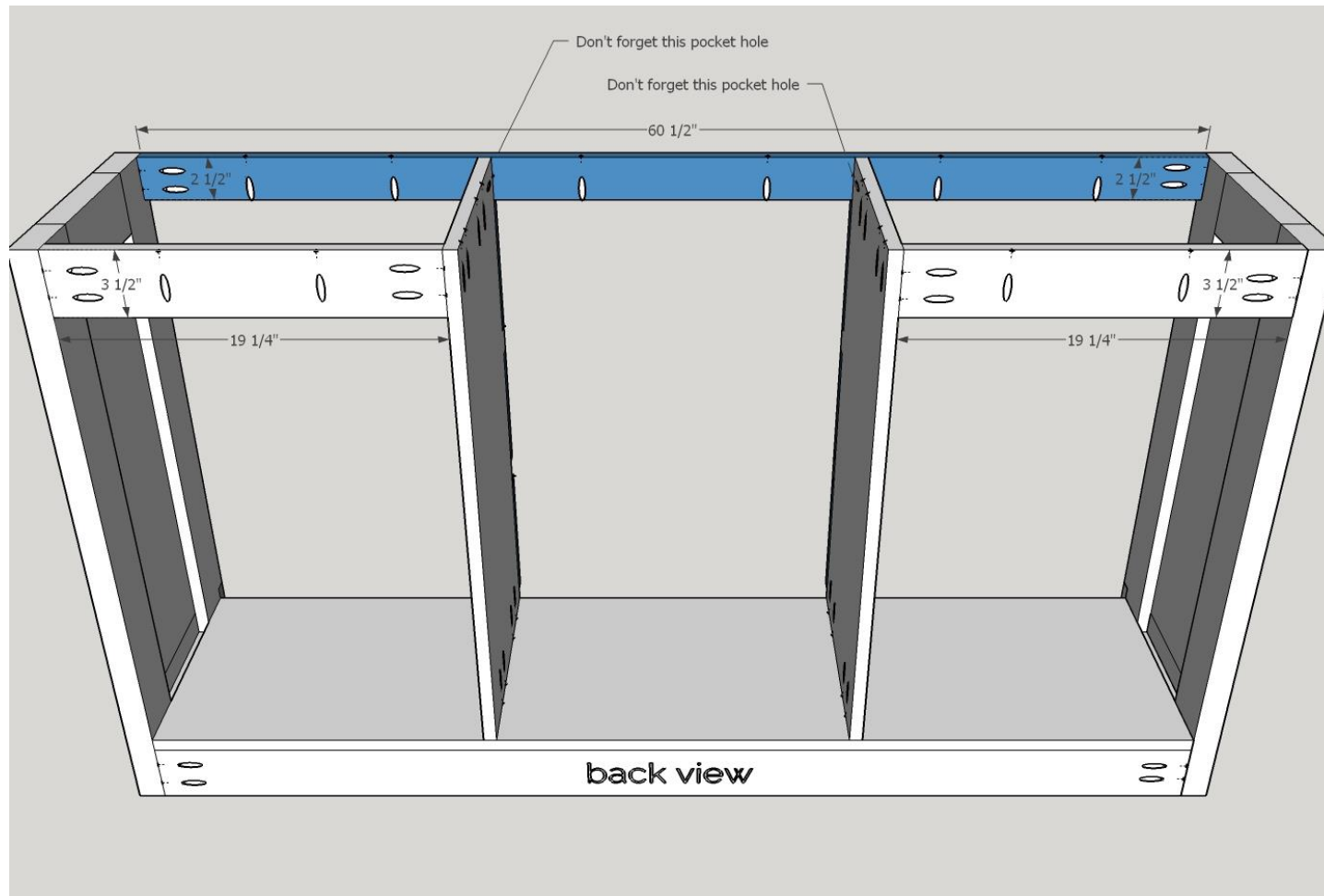
8. Measure 19.25" from the inside of each end and mark on the base for the location of the inside supports you just cut and drilled pocket holes. Draw a straight line from back to front. Line up the boards with the line with the pocket holes facing toward each other in the center, and the single pocket hole facing the front. Secure with wood glue and 8 - 1.25" pocket hole screws to the base, Check measurements to make sure they match the diagram below.



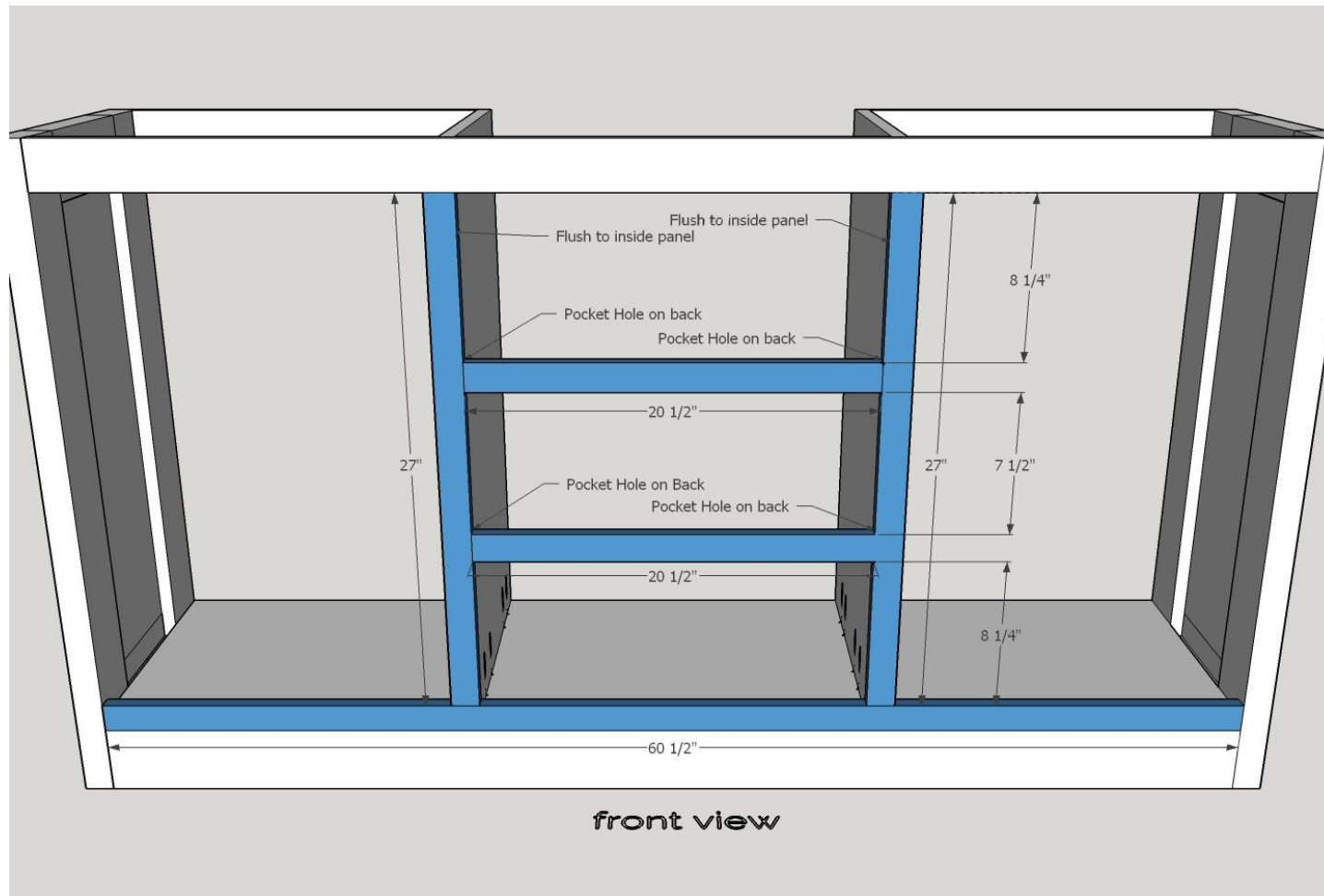
9. Drill pocket holes at each end of the 1 x 4 x 19.25" boards, and 2 across the front facing up. You will eventually secure the top using these.



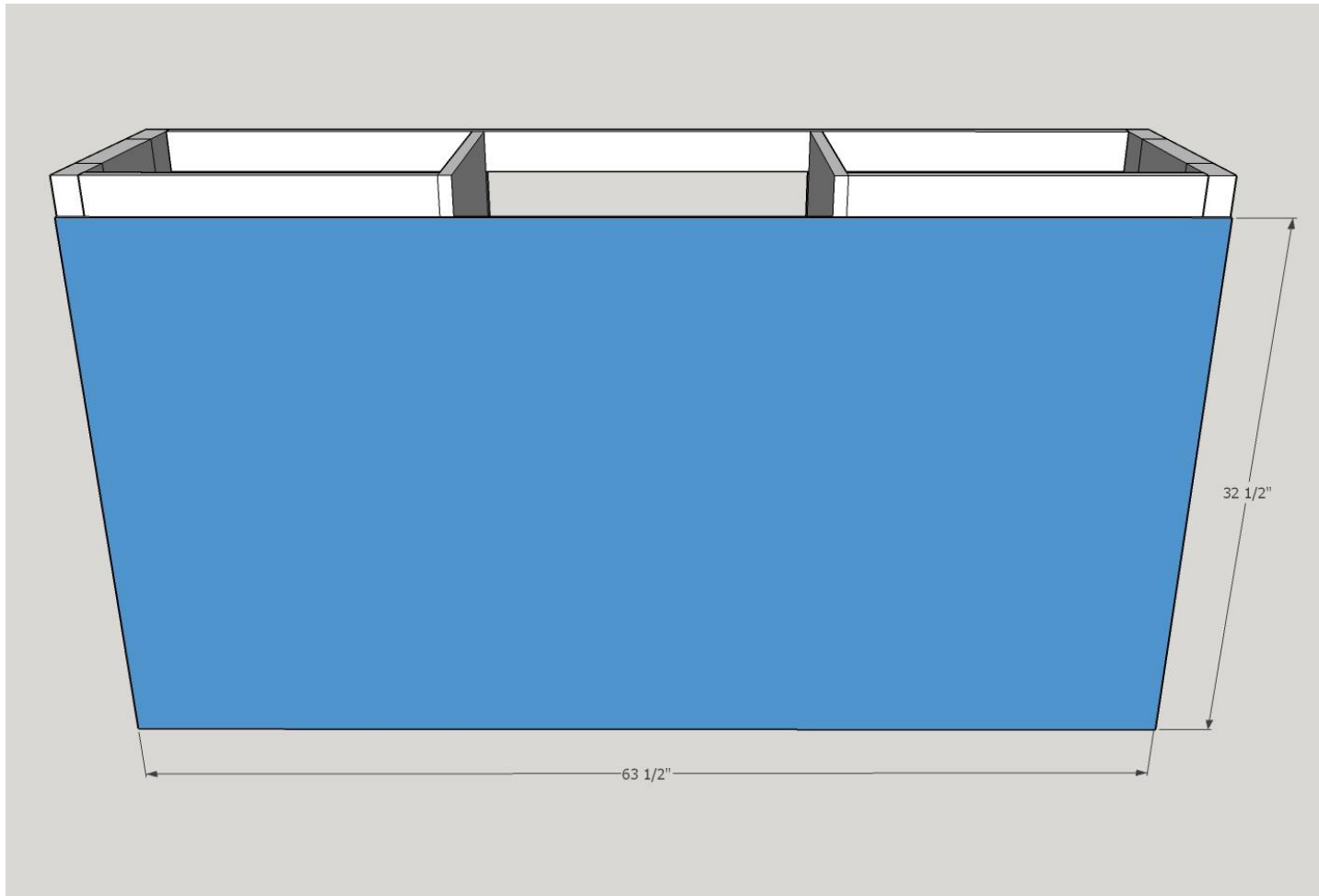
10. Drill pocket holes at each end of the 1" x 3" x 60.5" board, and 6 across the front facing up. You will eventually secure the top using these. Secure the board to the front using 1.25" pocket hole screws on each side. When attaching the two "Don't forget this pocket hole" (see diagram below) on the inside supports, make sure that you check that the distance from the side to the center board matches the back at 19.25".



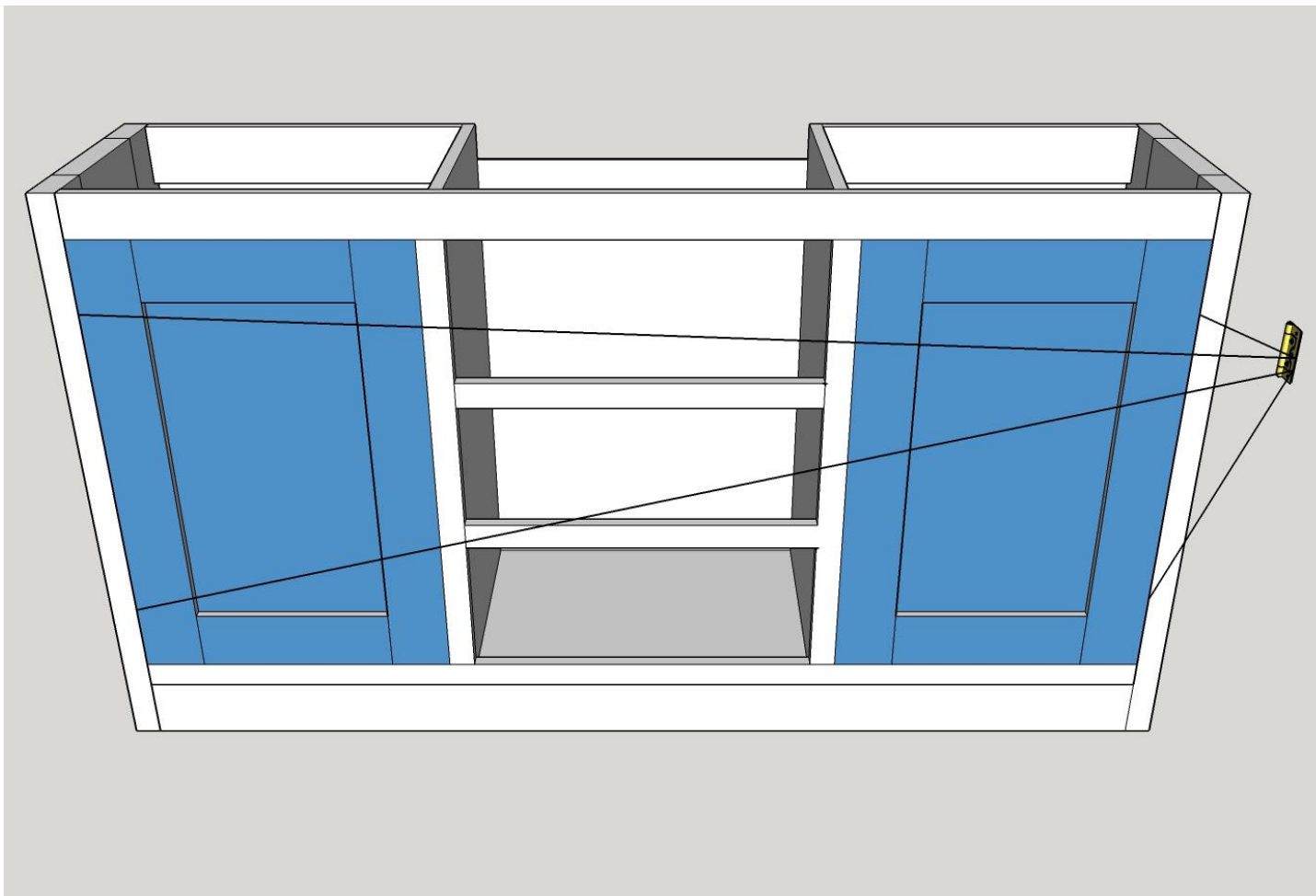
11. Attach the 1" x 2" x 60.5" to fit at the bottom of the sideboard. Secure in place with wood glue and finishing nails. Attach the 2 – 1" x 2" x 27" pieces to the front, flush to the inside panels, using wood glue and finishing nails. Drill a pocket hole on either end of the 1" x 2" x 20.5" boards, glue and attach using 1.25" pocket hole screws based on the distance measurements below.



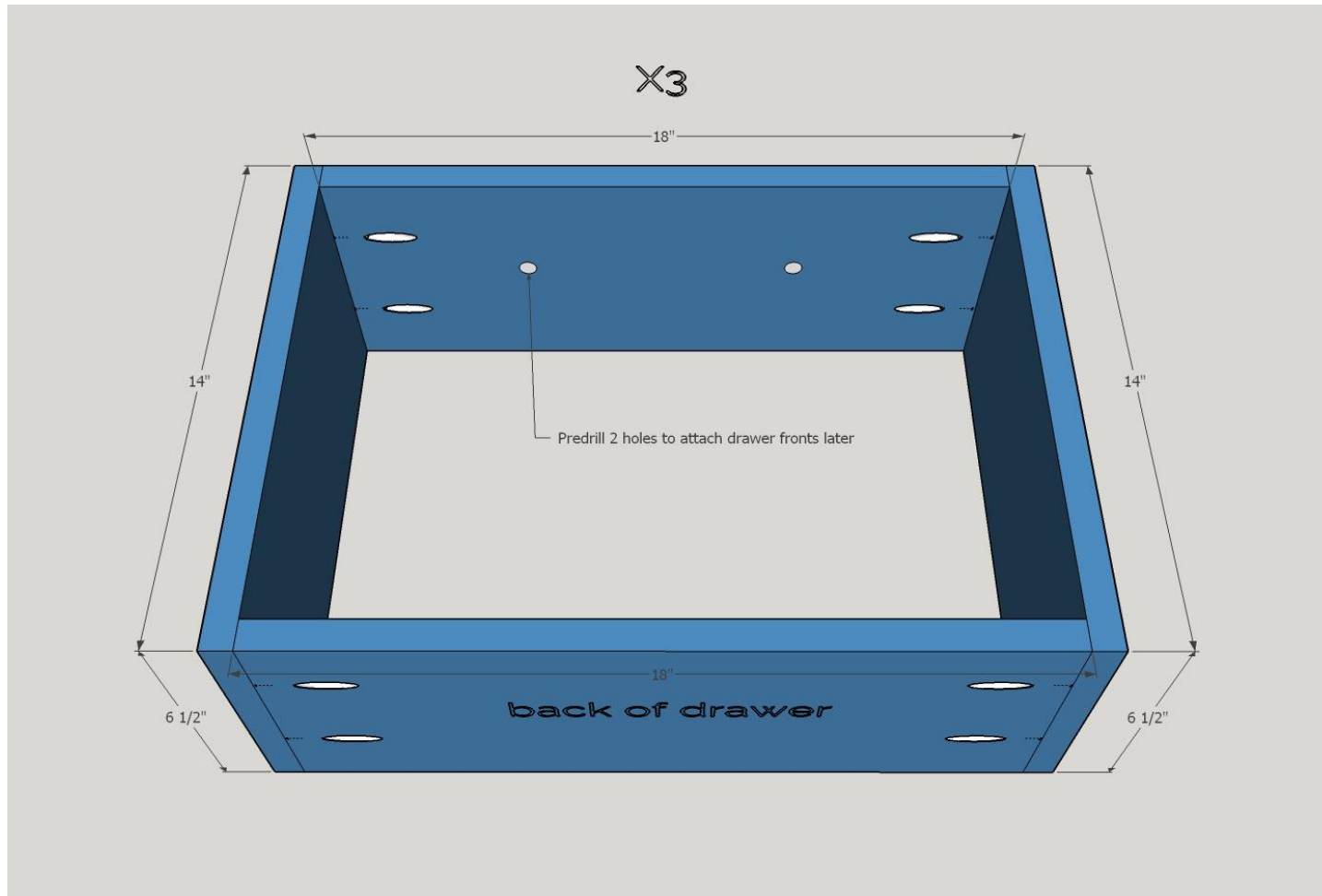
12. Cut a 1/4" piece of plywood to 63.5" x 32.5" and secure to the back using 1.25" finishing nails.



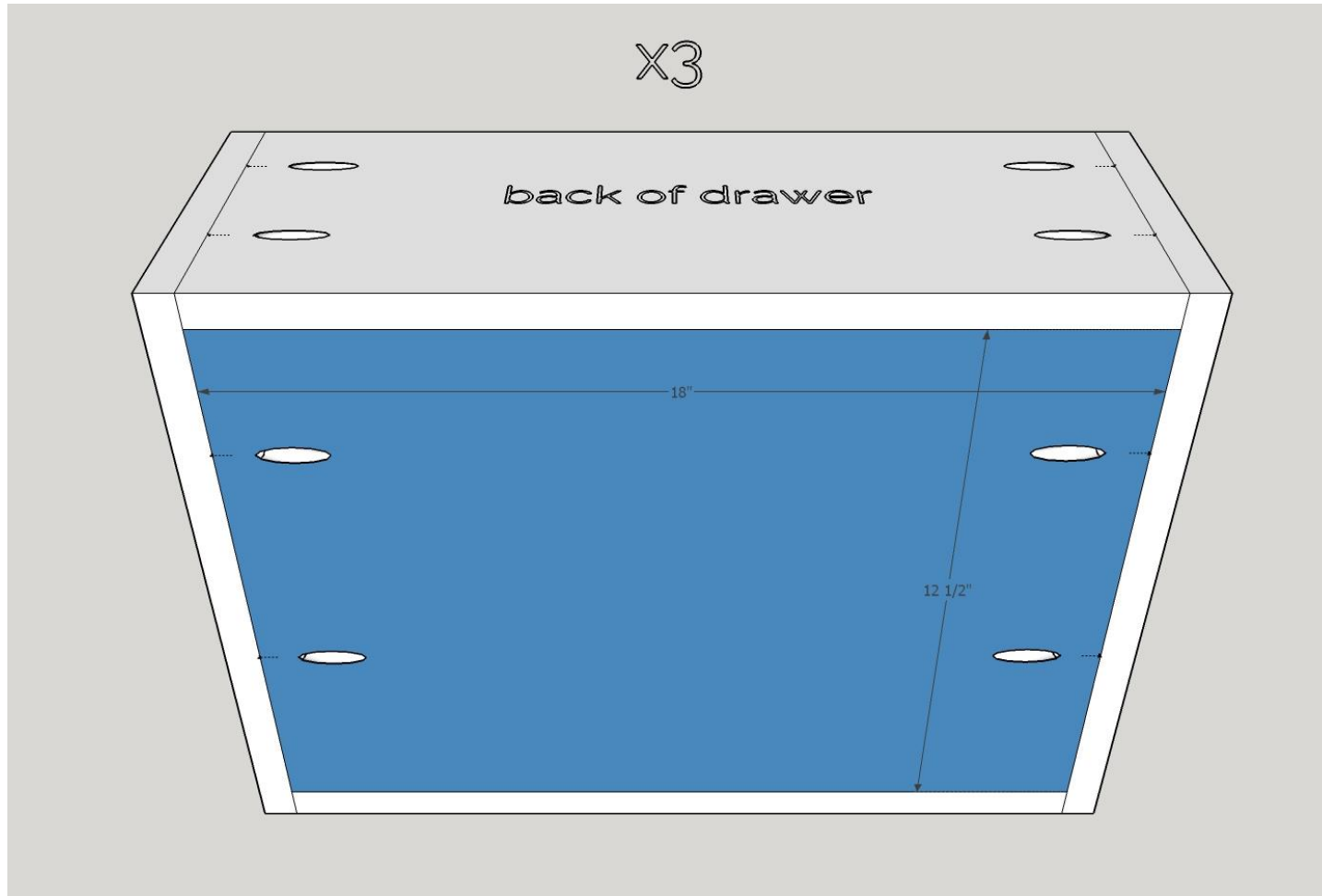
14. Attach the doors using a non-mortise hinge. You can place them at any distance you'd like. We placed them at 3.75" from the top and bottom of each door.



15. Create 3 of these drawer boxes. Drill 2 pockets holes on either side of the 18" boards. On one of the 18" boards, also predrill two 5/32" holes for attaching the drawer front. Attach to create a box, checking for square, using wood glue and 1.25" pocket hole screws.



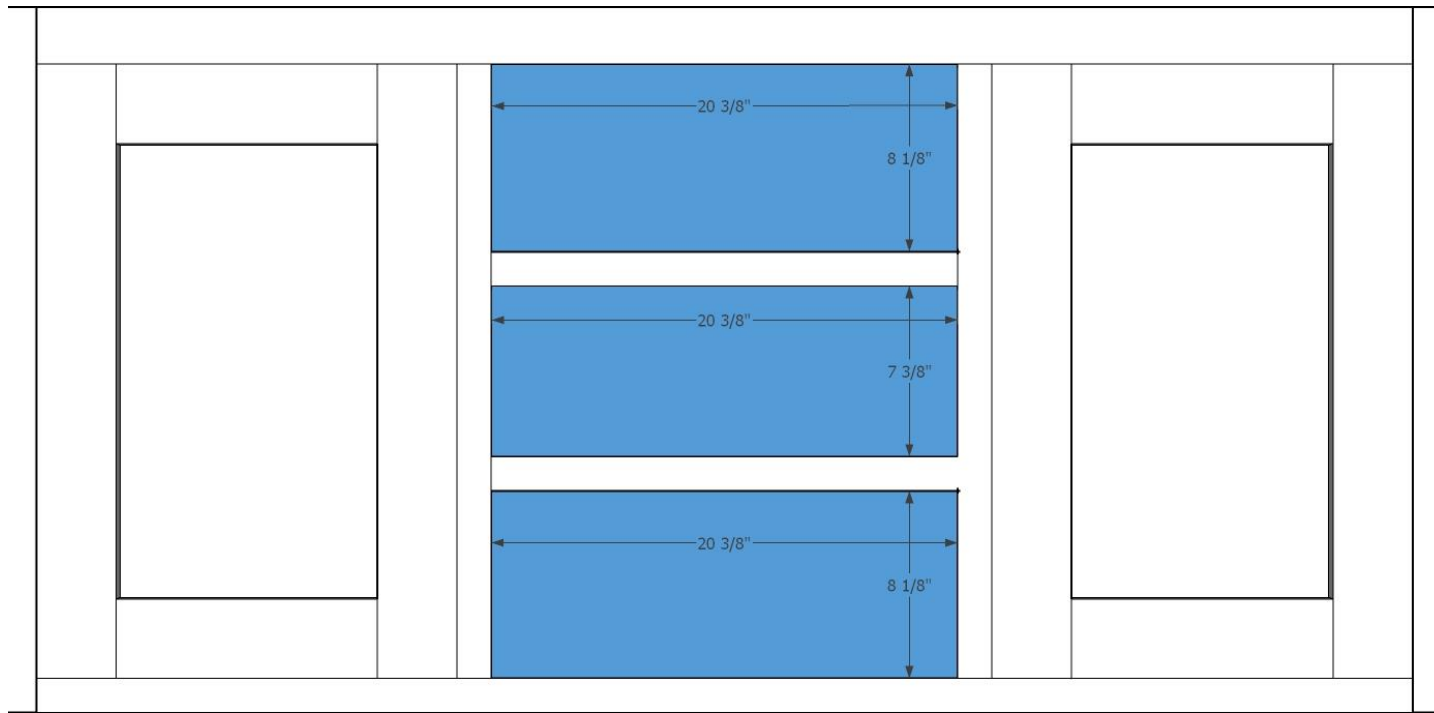
16. Cut three 18" x 12.5" board out of either 3/4" plywood or pine shelving. Drill two pocket holes on each side. Secure in place using 1.25" pocket hole screws. At this point you'll also need 3 sets of 14" drawer slides. Attach the piece that goes on to the drawer flush with the front. Attach the piece that goes on the sideboard 3/4" back from the face, and about 1/4" up from the bottom of each drawer space on the sideboard.



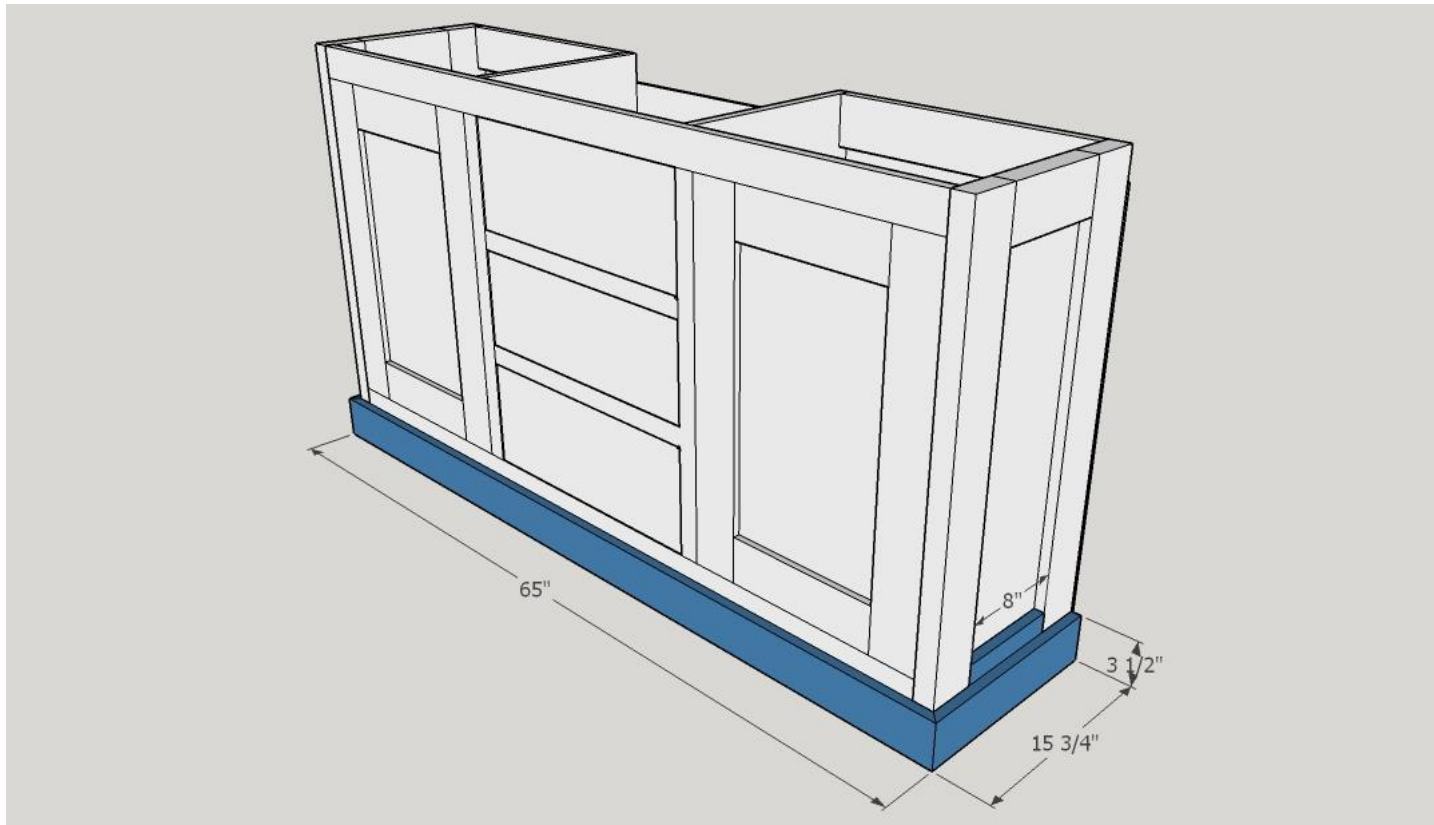
17. Double check the size by measuring your drawer openings in case yours are slightly different. You should be able to fit a credit card around the drawer once the face is in.

Start with the bottom drawer. After you've successfully installed the drawer slides, slide in one of boxes into place on the track (it will make it easier if the other two drawers are left out for now). Place the cut face into the opening up against the drawer box. Using two credit cards, slide them under the bottom of the face to give it some clearance. Check it for square and if all looks good, secure in place with two 1 1/4" wood screws from the back using the holes you predrilled into the box.

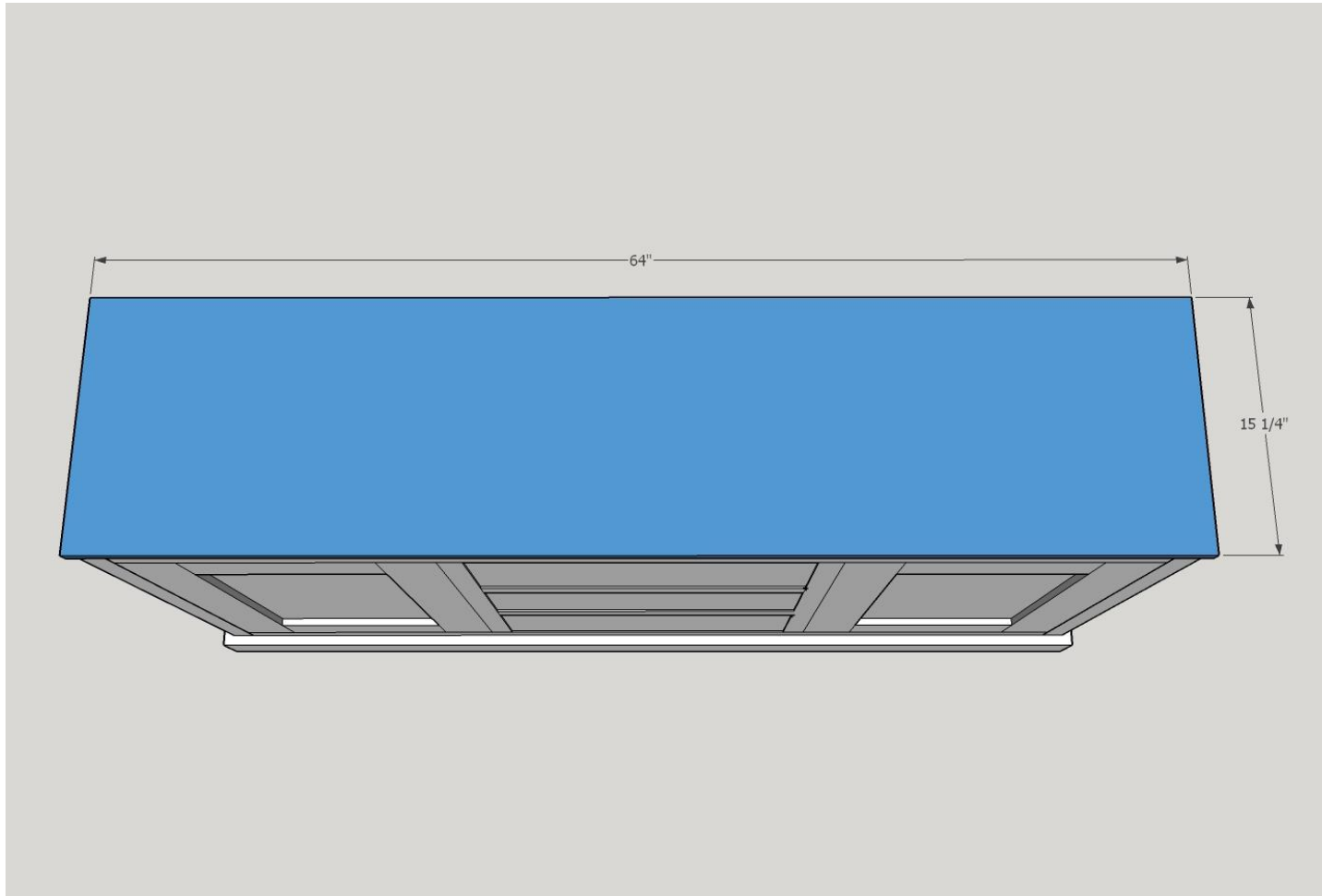
Repeat this process for the other three drawers.



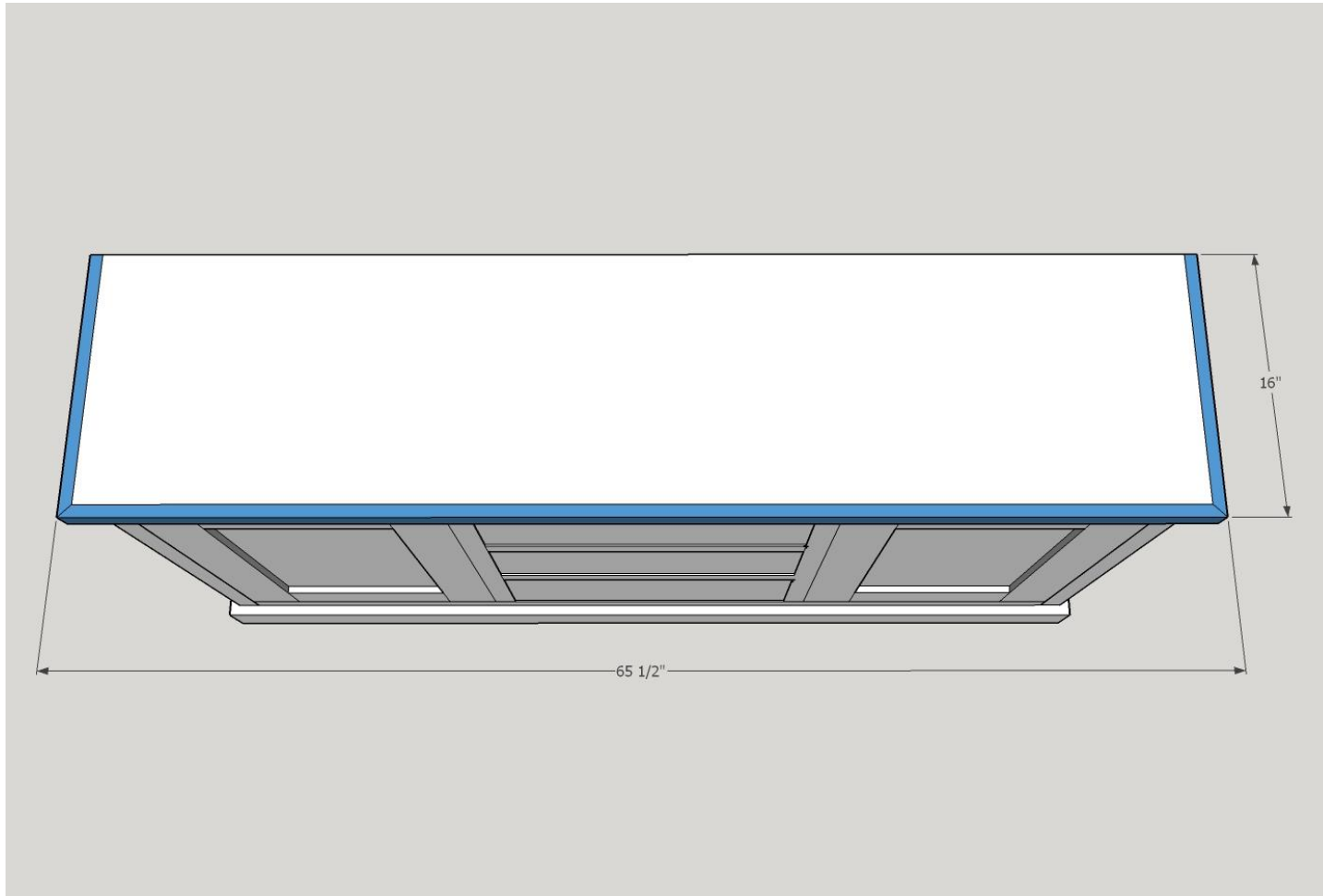
18. For the baseboard, ensure you've cut both ends of the 65" piece and one end of each of the 15.75" pieces at 45 degrees where the corners will meet. We used a 3.5" baseboard for this. Attach the 2 – 1" x 2" x 8" pieces on each side. Secure with finishing nails and wood glue.



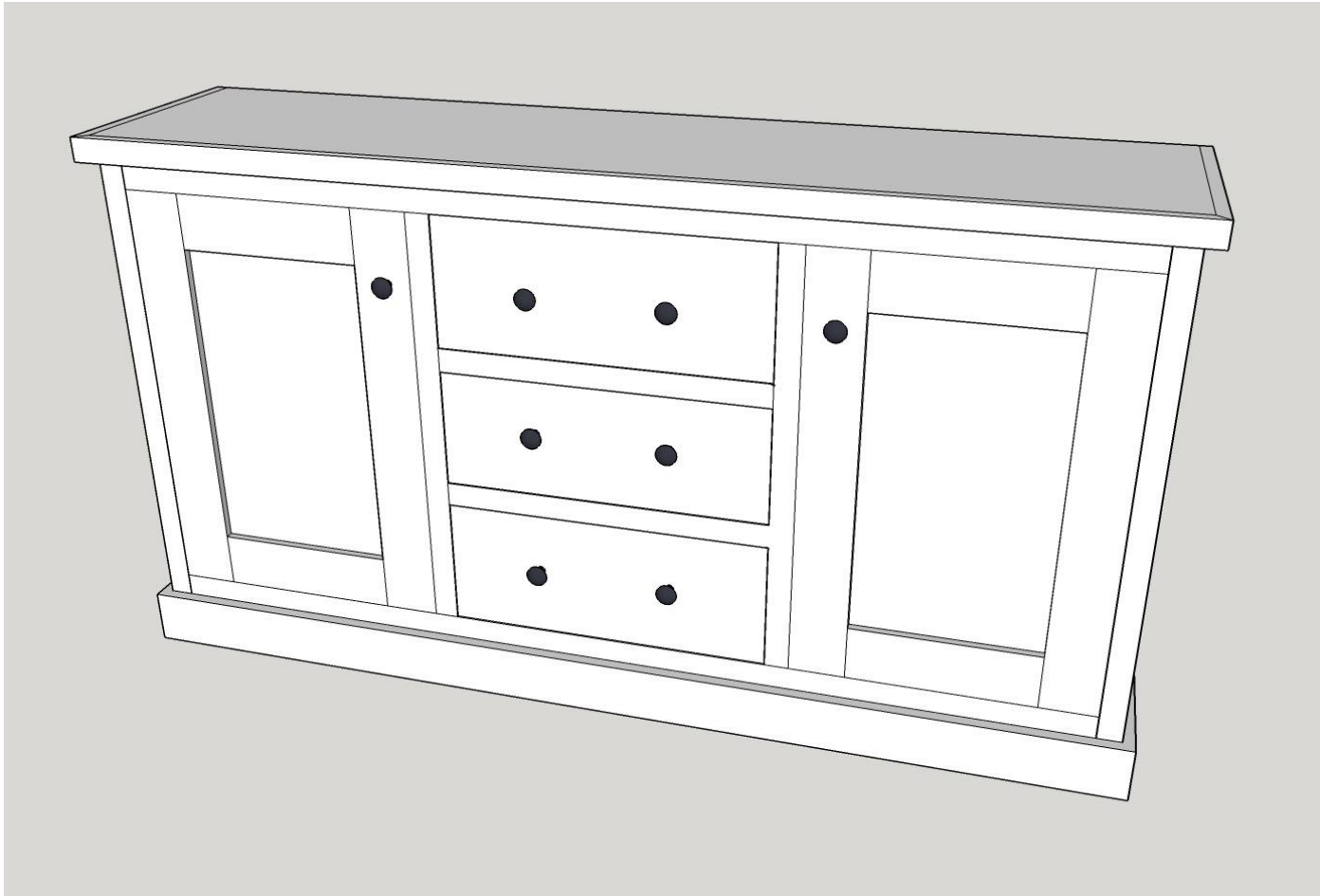
19. Place your top (64" x 15.25") in place. Let it overhang on each side and front by 1/4" and flush with the back. Secure using all of the pocket holes you made in the front, back and center supports on the inside of the sideboard.



20. Attach the 1" x 2" x 16" with 45 degree angles on each end. Attach the 1" x 2" x 65.5" with 45 degree angles on each end. Secure flush to the top using wood glue and 1.25" finishing nails.



21. Choose your hardware and predrill holes as required to install. You can also add shelving inside the doors and secure either by using 1 x 2" x 12" pieces on either side for the shelf to sit on, or you can install shelf clips and cut the wood for the shelves to the proper sizes to fit in, or you can leave it as is if you have large items to store out of sight.



22. Fill holes, sand and paint or stain and you'll have a beautiful new sideboard you can be proud of.
23. Add some magnetic or double roller catches to the doors so that they will stay closed. Depending on the manufacturer you use, you may need to add an extra piece of wood inside the top of each door opening to attach it.